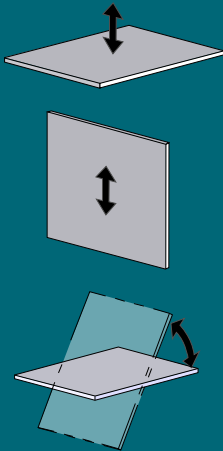


PT10FS10TAIR
1500 lbs [680 kg]



**THE ORIGINAL
& TRUSTED NAME
IN VACUUM LIFTING
EQUIPMENT**



908 West Main - P.O. Box 368
Laurel, Montana 59044 U.S.A.
406.628.8231 (phone)
406.628.8354 (fax)

800.548.7341
www.WPG.com



Products are manufactured under an
ISO 9001 quality management system

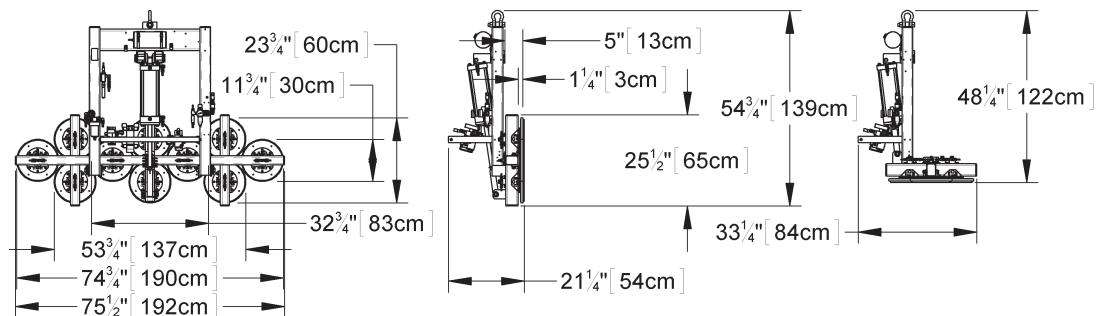
Wood's Powr-Grip products are sold
through authorized dealers.

AIR-POWERED TILTER 1500



To reduce the risk of load damage,
this Powr-Grip® vacuum lifter
provides effortless power tilting and
optimal support of stone and other
high-density materials.

Standard Pad Spread	23 ³ / ₄ " x 74 ³ / ₄ " [60 x 190 cm]
Number / Size of Pads	10 / 10" [25 cm] diameter vacuum pads with replaceable sealing rings
Load Capacity (On smooth, nonporous surfaces. Please contact us for recommendations on other surfaces.)	1500 lbs [680 kg]
Unit Weight (for Air Power System)	355 lbs [161 kg]
Standard Operating Power	Compressed air, 11 SCFM [311 liters/min] @ 80 psi [552 kPa]
Apply	10 seconds (approximately)
Release	3 seconds (approximately)
Load Movement	Power tilt, 90° between upright and flat
Time for 90° Tilt	8 seconds (approximately)
Tilt Duty	Continuous
Standard Features	Vacuum gauge Vacuum reserve tank Vacuum line filter Spring-mounted pads Individual shutoffs to all pads Closed cell foam pad rings Blow-off for quick release
Available Options	12-Volt/DC vacuum back-up system (EO1DCB) Vacuum loss warning buzzer (EO3VLW) Movable control pendant (EO9RP) Control handle extensions (LB9HEO) Pad frame extension arms (CF11PTEAO) Alternative dimensions and configurations of the pad frame, including: 33" x 74" [838 mm x 1880 mm] (CF9ADO) 60" x 90" [1524 mm x 2286 mm] (CF9ADO)
Alternative Power Systems (see next page)	AC power system (PT10FS10TAC) DC power system (PT10FS10TDC)
Design Standards: (See www.WPG.com for more information.)	ASME B30.20 - 2006 (BTH-1 Design Category "B", Service Class "0")

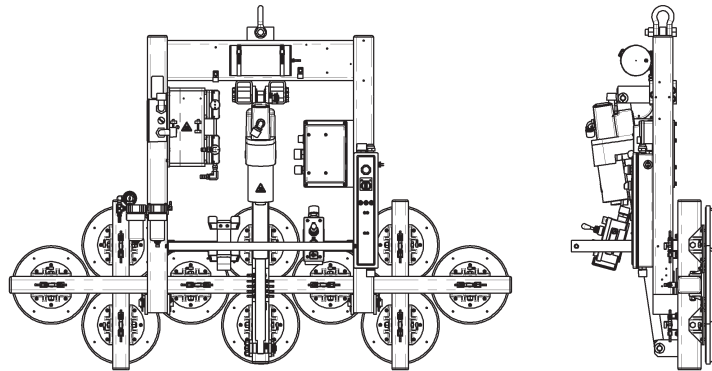


Environmental conditions can affect product performance and longevity; consult the product instructions on
www.WPG.com or contact a Technical Sales Representative for more information.
Based on product information at time of publication.

ALTERNATIVE POWER SYSTEMS

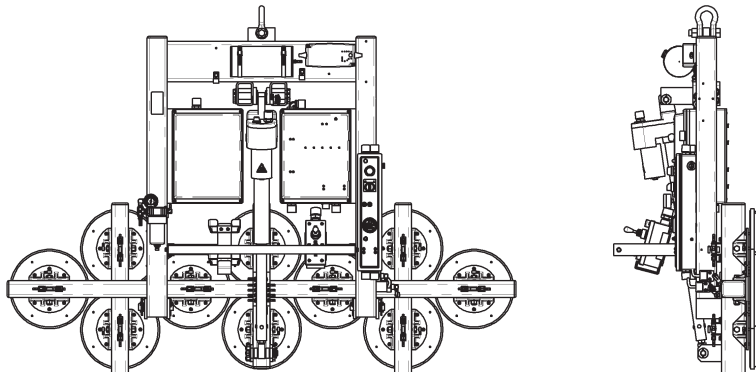
AC POWER SYSTEM

Standard Operating Power	120 volts AC, 50/60 hertz, 12 amps (240 volts AC, 50/60 hertz, 6 amps also available)
Vacuum Pump	Diaphragm type, 3 SCFM [85 liters/min] nominal airflow
Apply	10 seconds (approximately)
Release	6 seconds (approximately)
Time for 90° Tilt	14 seconds (approximately)
Tilt Duty	40 tilts per hour (at maximum load)
Standard Features	Green lift light Movable control pendant Twist-lock electrical plug Blow-off for quick release
Unit Weight	410 lbs [186 kg]



DC POWER SYSTEM

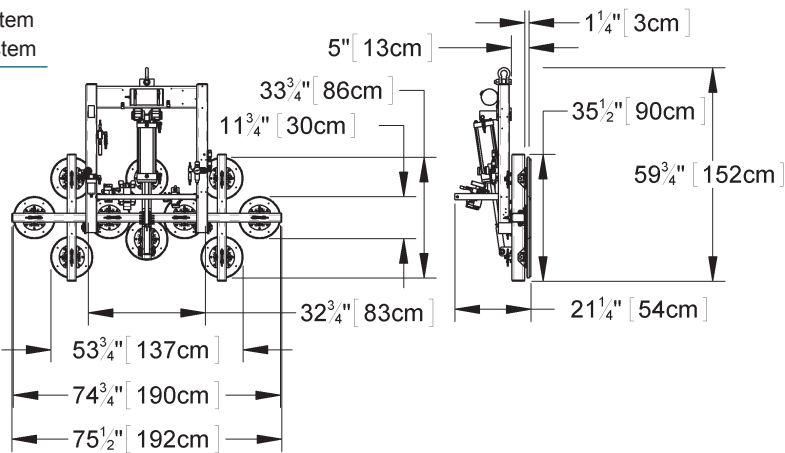
Standard Operating Power	12 volts DC, 54 amps
Vacuum Pump	Diaphragm type, 3 SCFM [85 liters/min] nominal airflow
Apply	10 seconds (approximately)
Release	6 seconds (approximately)
Time for 90° Tilt	21 seconds (approximately)
Tilt Duty	36 tilts per hour (at maximum load)
Standard Features	On-board battery and charger Battery energy gauge Green lift light Movable control pendant Blow-off for quick release
Unit Weight	440 lbs [200 kg]



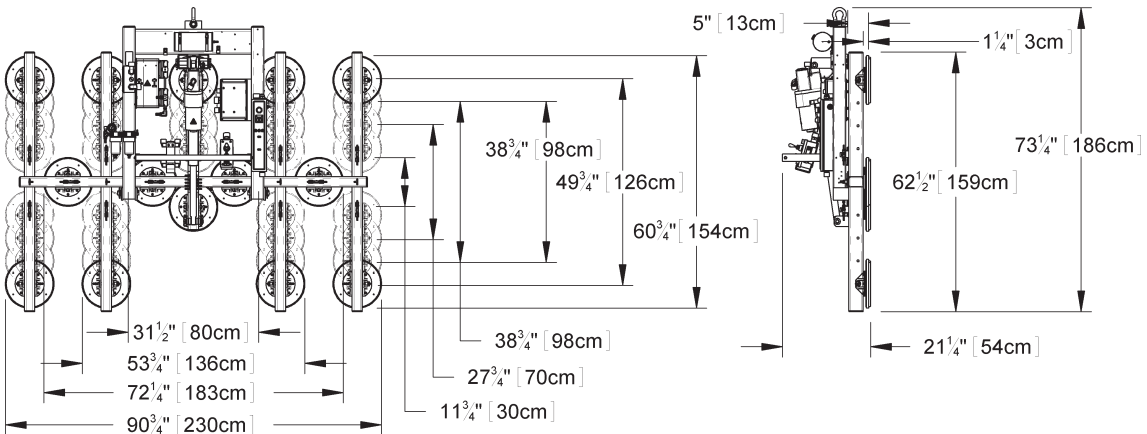
OPTIONAL FRAME CONFIGURATIONS (CF9ADO)

An Alternative Dimension Pad Frame consists of a specially designed version of the frame used to support the vacuum pads. This option enables a vacuum lifter to handle loads with different dimensions from those of the standard pad frame. In this way, users can tailor their vacuum lifters for specific materials handling applications, without the added time and expense of ordering custom-made equipment. In addition to different overall dimensions, these pad frames may also feature Movable Pad Mounts or Individual Vacuum Pad Shutoffs, depending on the pad frame selected. Custom-made pad frames are also available.

PT10FS10T	
Standard Pad Spread	33¾" x 74¾" [86 cm x 190 cm]
Number / Size of Pads	10 / 10" [25 cm] diameter vacuum pads with replaceable sealing rings
Load Capacity (On smooth, nonporous surfaces. Please contact us for recommendations on other surfaces.)	1500 lbs [680 kg]
Unit Weight	355 lbs [161 kg] with Air power system 410 lbs [186 kg] with AC power system 440 lbs [200 kg] with DC power system

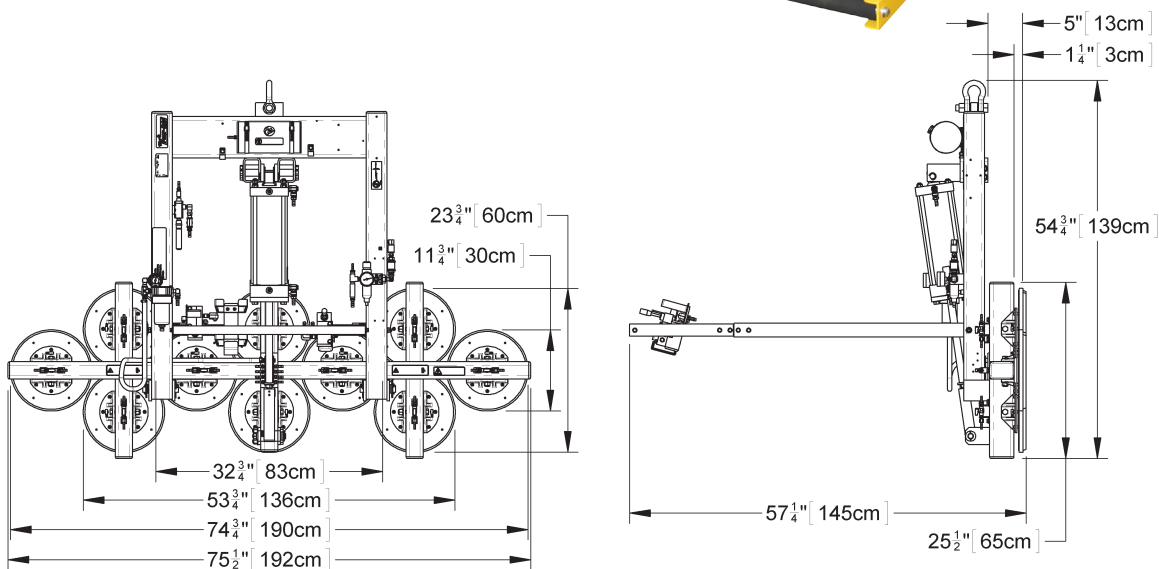
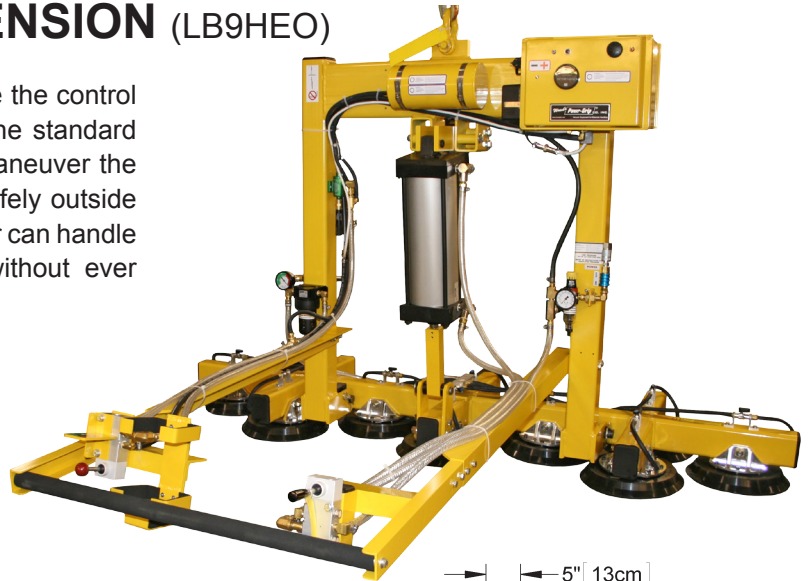


PT14FS10T	
Standard Pad Spread	60¾" x 90¾" [154 cm x 230 cm]
Number / Size of Pads	14 / 10 / 10" [25 cm] diameter vacuum pads with replaceable sealing rings
Load Capacity (On smooth, nonporous surfaces. Please contact us for recommendations on other surfaces.)	1500 lbs [680 kg]
Unit Weight	520 lbs [236 kg] with Air power system 575 lbs [261 kg] with AC power system 605 lbs [275 kg] with DC power system



OPTIONAL HANDLE EXTENSION (LB9HEO)

Control Handle Extensions provide a way to move the control handle a distance of 36" [91 cm] outward from the standard operator position. This enables the operator to maneuver the load and to use the tilt control while remaining safely outside the path of tilting materials. In this way, the operator can handle a very wide load conveniently and efficiently without ever risking contact with the load itself.



PAD FRAME EXTENSION ARMS (CF11PTEAO)

Available for Powr-Grip's® PT10 vacuum lifters, Pad Frame Extension Arms allow the operator to reconfigure the vacuum pads, to support large or irregularly shaped loads. Simply remove a pad mount from its existing location, install the extension arm onto the end of pad frame tube, and move the mount outward to the extension arm. When all extension arms are installed, the overall width of a PT10 pad frame increases by approximately 2 feet [0.6 m]. Since Pad Frame Extension Arms are compatible with all existing PT10 vacuum lifters, new and existing customers alike are sure to benefit from the versatility and ease of use engineered into this option.

Although Pad Frame Extensions are sold individually, Powr-Grip strongly recommends that extension arms be purchased and installed in matched pairs, to maintain the balance and symmetry of the vacuum lifter whenever possible.

